



# 103 MOORE AVENUE

## GRAYS, RM20 4XN

£350,000  
FREEHOLD

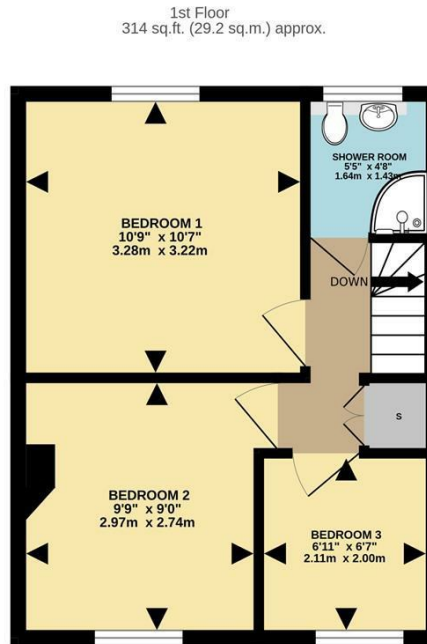
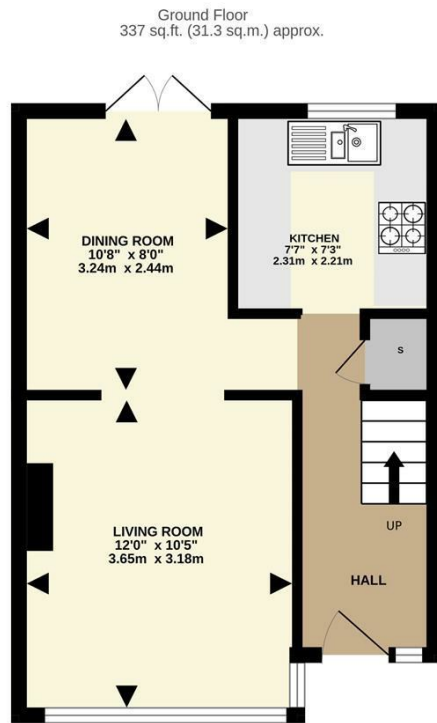
Thomas Marsh is delighted to present this charming three-bedroom terraced house, offering comfortable living in a well-connected location. Situated in the heart of Grays, Essex, this property offers easy access to a wealth of amenities, excellent transport links, and desirable schools, making it an ideal residence for families, first-time buyers, and savvy investors. and will be sold as a chain free property.

### Key Features:

Bedrooms: 3 generously sized bedrooms, perfect for family living or a home office.

**tm**  
thomas marsh





epcsinessex

TOTAL FLOOR AREA : 650 sq.ft. (60.4 sq.m.) approx.

Whilst every attempt has been made to ensure the accuracy of the floorplan contained here, measurements of doors, windows, rooms and any other items are approximate and no responsibility is taken for any error, omission or mis-statement. This plan is for illustrative purposes only and should be used as such by any prospective purchaser. The services, systems and appliances shown have not been tested and no guarantee as to their operability or efficiency can be given.

Made with Metropix ©2025



Energy Efficiency Rating		
	Current	Potential
Very energy efficient - lower running costs		
(92 plus) A		90
(81-91) B		
(69-80) C	70	
(55-68) D		
(39-54) E		
(21-38) F		
(1-20) G		
Not energy efficient - higher running costs		
England & Wales	EU Directive 2002/91/EC	

Agents Note: Whilst every care has been taken to prepare these particulars, they are for guidance purposes only. All measurements are approximate and are for general guidance purposes only and whilst every care has been taken to ensure their accuracy, they should not be relied upon and potential buyers/tenants are advised to recheck the measurements

Grays Sales  
47 Orsett Road  
Grays  
Essex  
RM17 5HJ

01375 370779  
sales@thomas-marsh.com  
www.thomas-marsh.com

